



victory programs

40 years

opening doors to hope, health & housing

A neighborhood information package on
Victory Programs' new recovery home for women





VICTORY PROGRAMS: RESPONDING TO THE OPIATE CRISIS—FULFILLING A NEED

- Opioids kill more people in Massachusetts than car accidents and guns combined.
- Detox programs in Boston are operating at 97 percent capacity, and individuals seeking treatment in residential programs in 2014 waited an average of more than three weeks for a detox bed to become available.
- There were 1,008 deaths from opioid overdoses in the Bay State in 2014, a 33% jump from 2012.
- In the first three months of 2015 alone, there was an average of two deaths a day across Massachusetts from heroin overdoses.
- When the Bridge to Long Island closed on October 8, 2014, Boston lost 70% of its women's recovery beds – leaving a gaping hole in the fight against heroin addiction in the Commonwealth.
- Persons receiving treatment for addiction to alcohol or drugs are disabled individuals under the Americans with Disabilities Act.

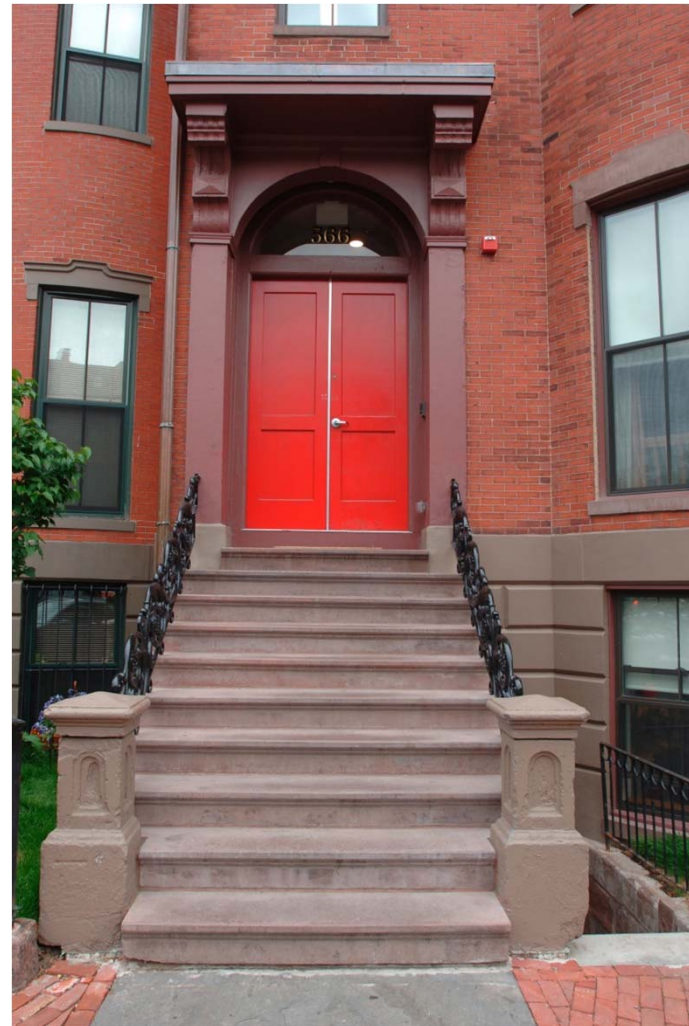




ABOUT VICTORY PROGRAMS

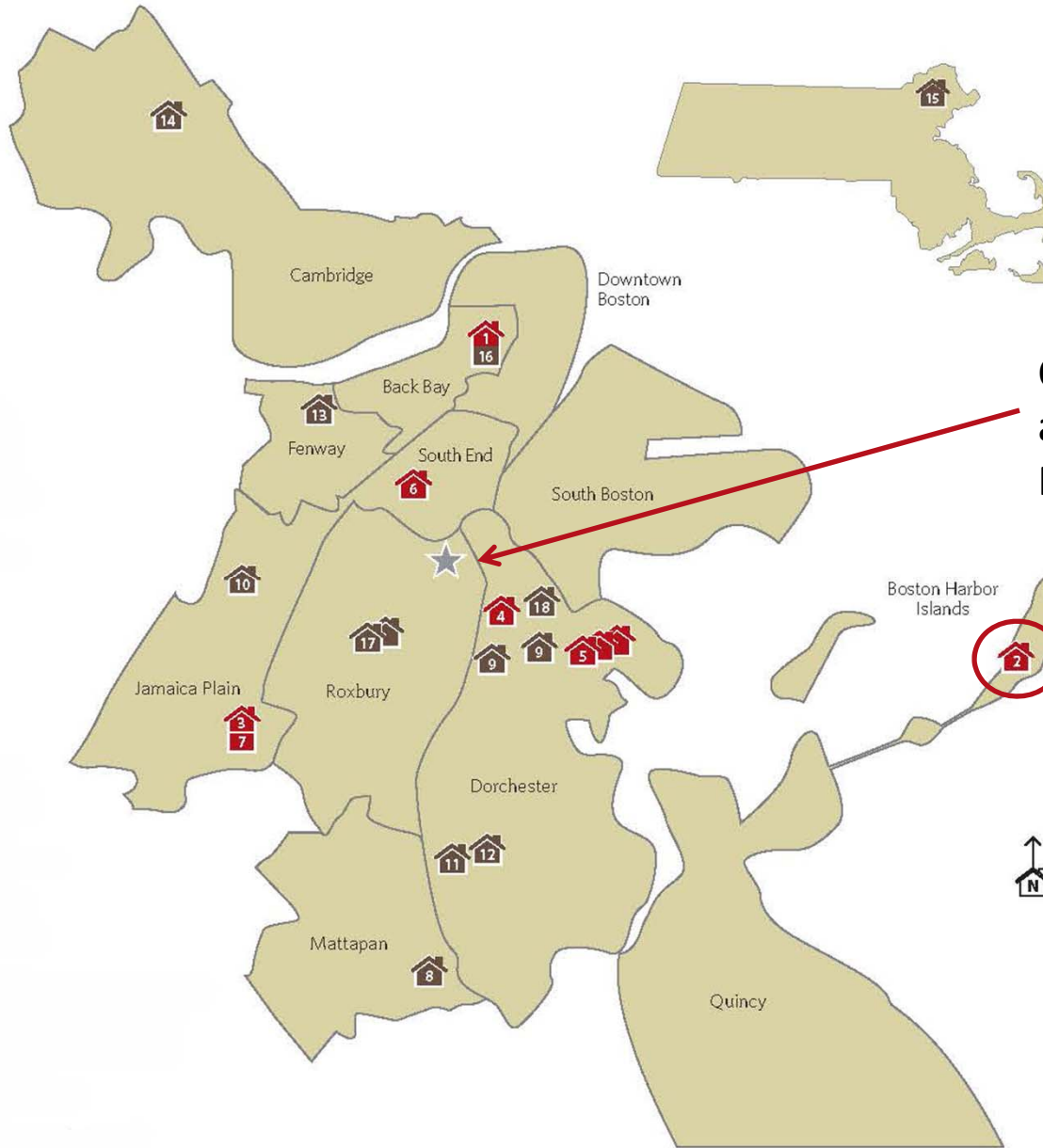


- Founded in 1975 as a private, non-profit organization
- Began as a single program in Boston for Vietnam veterans with drug and alcohol addiction
- Now includes 17 programs in Boston, Cambridge & Topsfield
- Serves 2,300 women, children and families annually
- Provides licensed health and housing programs for people who are homeless, in addiction recovery or living with chronic illnesses like HIV/AIDS
- Receives funding and operating support from city, state and federal sources as well as private grants and donations





AGENCY MAP



Currently operating 7 programs
and our Administrative Office in
Roxbury and Dorchester

Lost our 47-bed
recovery program for
women when the Long
Island Bridge was closed
in October 2014





VICTORY PROGRAMS IN THE COMMUNITY

- We pride ourselves on being respectful and responsive neighbors, and have built a reputation city-wide.
- We get active in neighborhood association meetings, crime watch groups, and neighborhood clean-ups.
- We ensure immediate sidewalk snow removal, participate in activities that promote a healthy community and respects our neighbors.
- Some examples of neighborhood associations we closely work with include: Virginia Street, Chester Square, Chamblet Street, Hartford Street, Fabyan Street and Uphams Corner Westside.
- Our treatment centers are all licensed for safety and personnel by the Massachusetts Department of Public Health.





NEIGHBORHOOD PROGRAM HIGHLIGHTS

In 2008, Victory Programs opened Victory Housing on Warren Street in Roxbury.

Warren Street is a permanent housing program for 14 men and women who struggle with chronic homelessness.

Victory Housing on Warren Street was the agency's first permanent housing program.

This program has a history of success, with many residents gaining stability and fully integrating into the community.



NEIGHBORHOOD PROGRAM HIGHLIGHTS

In 2005, Victory Programs brought ReVision Family Home & ReVision Urban Farm in Dorchester under its umbrella.

ReVision Family Home is a 22 family shelter program for pregnant and parenting women and their children. Residents are generally between the ages of 18-22.

ReVision Urban Farm provides free and reduced cost produce to residents of ReVision Family Home and the local community of Dorchester and Mattapan.

ReVision Family Home provides a daycare center for the children of our clients, to help ease the burden of childcare costs.



NEIGHBORHOOD PROGRAM HIGHLIGHTS

In 2014, Victory Programs opened Chamblet Family Home, for pregnant and parenting women and their children, in Dorchester.

Chamblet Family Home provides transitional housing for 14 families.

Victory Programs has a 90% success rate when families leave our shelters for permanent housing.

Victory Programs' three family shelter programs house up to 43 families at any given time.





LONG ISLAND



In 2007, Victory Programs opened a state-of-the-art addiction recovery program for women on Boston's Long Island.

This program served up to 47 women at any given time – mostly young mothers or women with an HIV diagnosis.

While in residence, clients worked on their recovery, found jobs and worked to reunify their families.

Thousands of women were served at this program over its 7-year span

until...





LONG ISLAND

In October 2014, the City of Boston closed the Long Island Bridge, effectively closing all of the programs on the Island.

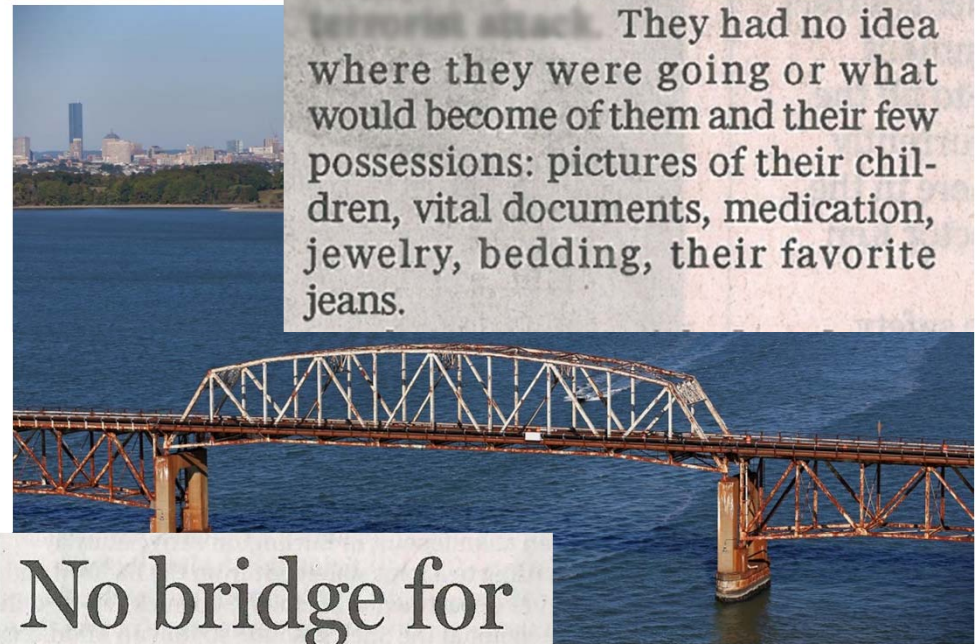
When the Bridge closed, Boston lost 70% of its women's recovery beds – leaving a gaping hole in the fight against heroin addiction in the Commonwealth.

Today, men's recovery programs still outnumber women's 10:1 in Massachusetts.

The Commonwealth is seeing a marked increase in overdoses among women, with few programs able to address their specific needs.

The Boston Globe
SATURDAY, OCTOBER 11, 2014

A refuge for those with little vanishes in hours of chaos



They had no idea where they were going or what would become of them and their few possessions: pictures of their children, vital documents, medication, jewelry, bedding, their favorite jeans.

No bridge for rehab clients

- Yvonne Abraham Globe
Columnist April 05, 2015

In Boston, recovery beds were in criminally short supply to begin with. The bridge closing evaporated two-thirds of the beds in women-only recovery homes in a single afternoon.



FINDING A NEW HOME

Since the closure of the Bridge in October, Victory Programs has worked tirelessly to find a new home for our women.

Ideal location:

- Is in close proximity to public transportation, local businesses and community health resources.
- Has outdoor space for family visits with children.
- Provides a safe and homey space for the women in residence.
- Is large enough to house up to 25 women comfortably.





ABOUT THE NEW PROPERTY

The new property will provide beds for 24 women from Boston in need of recovery services with 24-hour a day/7-day a week professional on-site staff.

Women live in residence for 6-8 months.

Family reunification is part of our commitment to pregnant and parenting women. Children and families visit during the day on the weekends.

Built on 3 lots, it has a large, green buffer zone from the street, and space for off-street parking.

Substantial interior repairs and rehab will take up to a year, with an opening expected in December 2016.

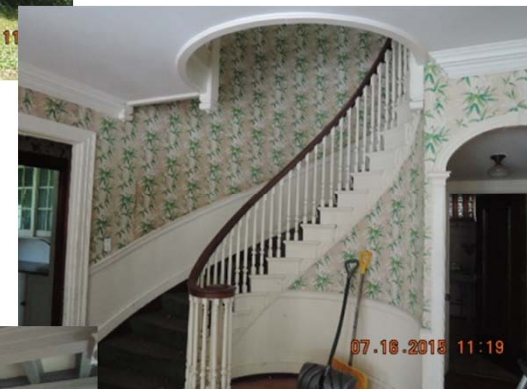
The site is zone by the City of Boston as a Multi Family Residential (MFR), which allows for a group residence, limited use.





NEIGHBORHOOD IMPACT

- Once renovated, this community-based building will be an important neighborhood home for women in recovery.
- Renovations expected to be complete by December 2016.
- Our priority and commitment is to always support local businesses, hire local talent, offer treatment and recovery to Boston women seeking addiction treatment and affiliate with neighborhood health centers/social services organizations.





HOW WE OPERATE

We Don't:

Administer methadone or opiate-based narcotic (e.g., Oxycontin) on site.

Allow unplanned, unscheduled visitors to the program.

Ignore our neighborhood.

Ever leave the facility without a professional staff presence.

We Do:

Lock and log all life-saving medications including heart disease, blood pressure, diabetes and/or HIV meds on site. These are closely monitored at all times by professionally trained staff.

Offer child reunification and family support . Visitation to women in our programs is monitored by staff.

Build caring communities in our single homes for women trying to start new lives without drugs or alcohol.

Our facility is staffed 24 hours a day/7 days a Week/ 365 days a year, with at least two people at all times.





HOW WE OPERATE

We Don't:

Operate unlicensed and unregulated 'sober homes.'

Allow residents to have cars.

Allow smoking anywhere on the property.

Leave trash/rubbish in piles.

Tolerate loud noise on the property.

We Do:

Operate Massachusetts Department of Public Health licensed and regulated addiction treatment programs.

Design our buildings with on-site/off-street parking to accommodate the appropriate number of spaces for staff members to park.

Offer services on smoking cessation.

Remove all program trash timely. Perform regular landscaping, including snow removal and monitor property management needs consistently. All work is done by Victory's facility team.

Ensure all neighbors have the right to quiet enjoyment of their community.





OUR TEAM



Jonathan D. Scott
President & CEO



Sarah Porter
Vice President & COO



Tammy Simmons-Dixon
Director of Victory Housing



Cecile Durham
Director of Human Resources



Angela Headley
Program Director
Shepherd House



Torleah Washington
Program Director
Portis & Chamblet Family Homes



Monicka Hassan
Program Director
ReVision Family Home



John O'Connor
Director of Facilities





CONTACT INFORMATION

For more information, please contact:

**Jonathan Scott
President & CEO
Victory Programs
965 Massachusetts Avenue
Boston, MA 02118
617-541-0222
jscott@vpi.org**





FACES OF VICTORY – AGENCY STAFF

